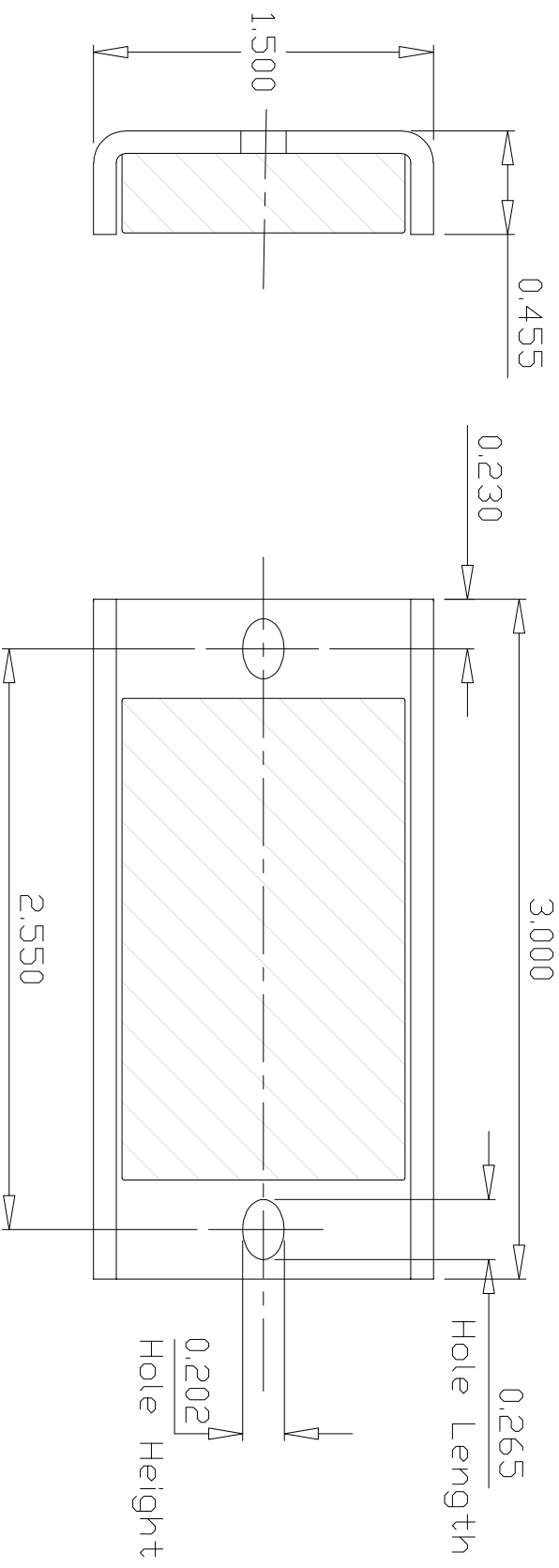


65CK0001

Revision 5



Specifications:

- 1) Ceramic-5 magnet
- 2) Zinc plated steel channel
- 3) Magnet and channel is glued.
- 4) Pull pounds: 60 lbs typical (Tested on a clean, ground steel plate 0.375" thick)
- 5) Working temperature range: -40°C~80°C
- 7) All dimensions are inches

